

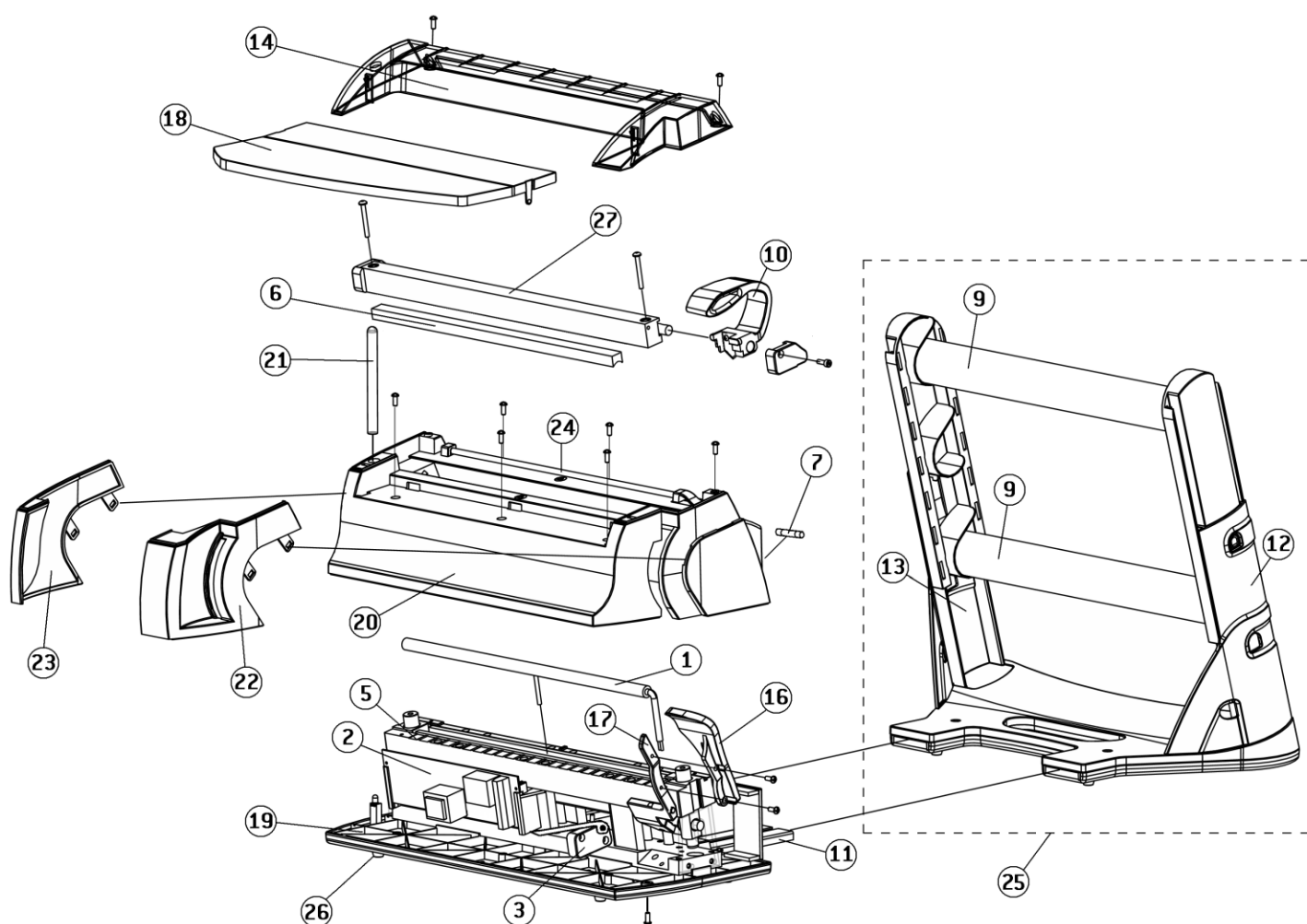
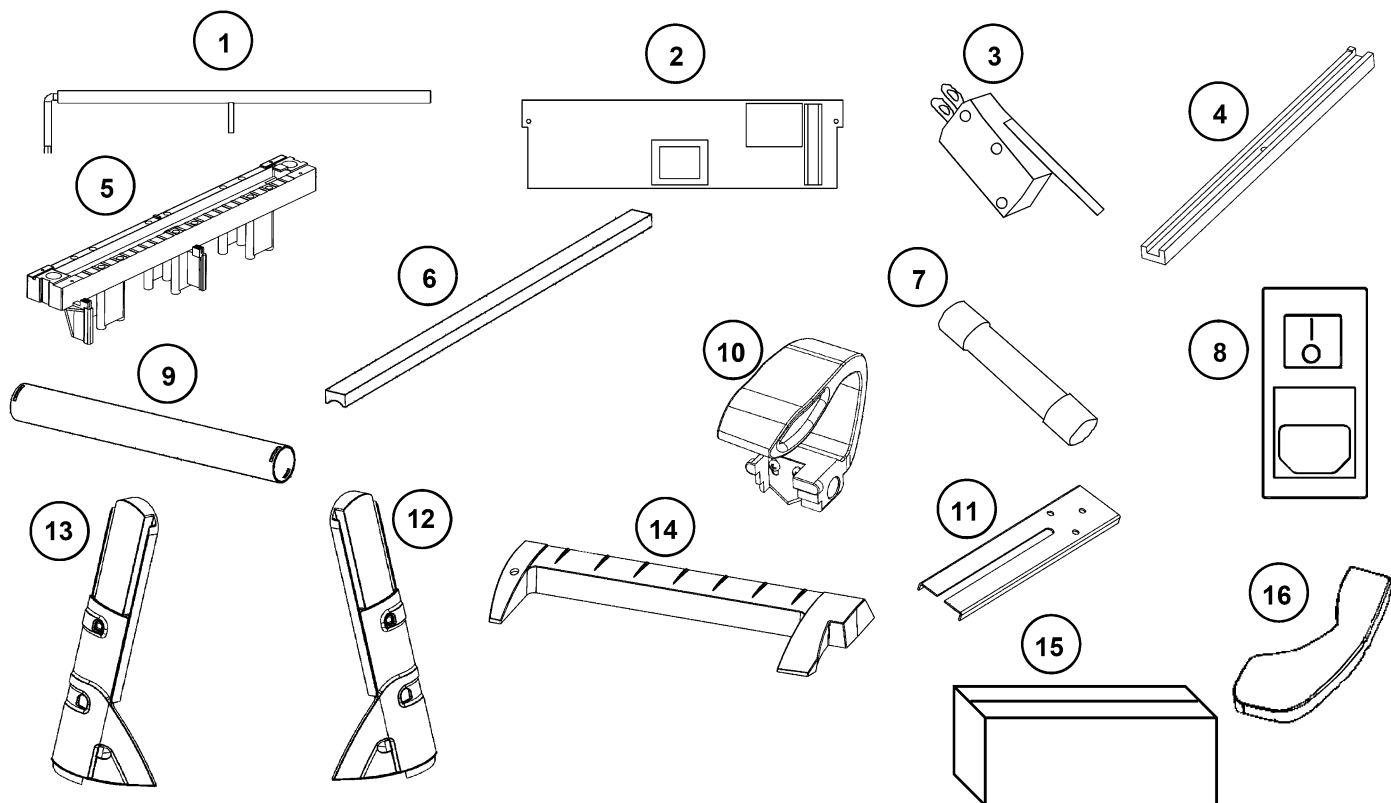


SPARE PARTS

Seal²

REV. 07

VALIDITY : As of Oct 2014



Spare parts

| NR. | DESCRIPTION | CODE |
|-----|--|----------|
| 1 | Seal² 100W heater | A810015X |
| 2 | Seal² power board 230V | A810016X |
| 3 | Seal² lever micro-switch | A810017X |
| 4 | Seal² heater insulation | A810018X |
| 5 | Seal² heater bracket | A810019X |
| 6 | Seal² rubber profile | A810021X |
| 7 | Seal² 4A fuse 5x20 | A810022X |
| 8 | Seal² supply module | A810023X |
| 9 | Seal² roll holder tube | A810024X |
| 10 | Seal² cutter handle group (cutter, cutter handle, 2 x screw (2,9x6,5)) | A810028X |
| 11 | Seal² flat metal camshaft | A810029X |
| 12 | Seal² left + internal roll-holder support | A810031X |
| 13 | Seal² right + internal roll-holder support | A810030X |
| 14 | Seal² transparent top cover | A810033X |
| 15 | Seal² packaging | A810035X |
| 16 | Seal² sealer handle | A810036X |
| 17 | Seal² metal handle | A810037X |
| 18 | Seal² operating tray | A810038X |
| 19 | Seal² basement | A810039X |
| 20 | Seal² main body | A810040X |
| 21 | Seal² light tube | A810041X |
| 22 | Seal² left cover | A810043X |
| 23 | Seal² right cover | A810042X |
| 24 | Seal² paper guide rod | A810044X |
| 25 | Seal² complete roll holder | A810045X |
| 26 | Kit 4 rubber feet | A810046X |
| 27 | Seal cutter support & guiding bar | A810010X |